



LASER WELDING PROFILES - ENDLESS POSSIBILITIES

激光焊接型材
- 无限可能

寫字樓/Office: 香港九龍大角咀通洲街123號國貿中心9樓B室

Unit B, 9/F Worldwide Centre, 123 Tung Chau Street, Tai Kok Tsui

Tel: +852-28366968 Phone: +852-92992995 +852-92992577

E-mail: sales@peakkong.com

貨倉/Factory: 廣東省東莞市謝崗鎮謝崗金海一路6號1棟

Building 1, No.6, Jinhai 1st Road, Xiegang Town, Dongguan City, Guangdong Province, P.R.China

Phone: +86-13392872790

E-mail: admin@ulsteel.com



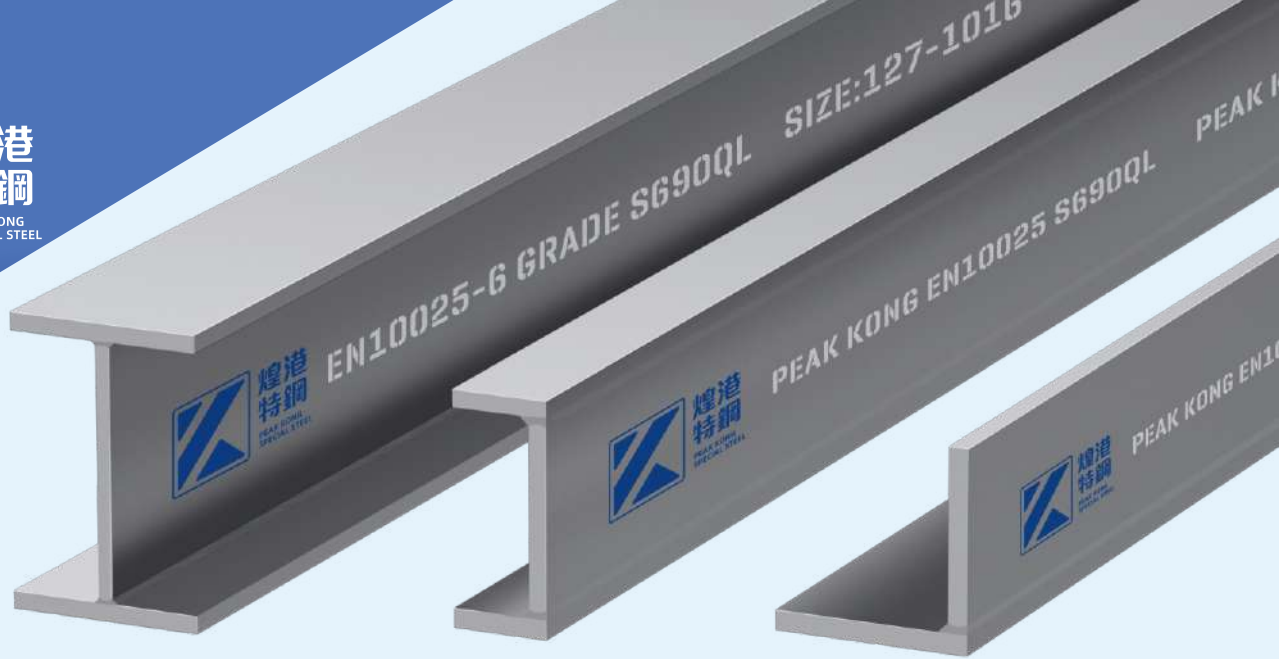
焯港
特鋼
PEAK KONG
SPECIAL STEEL

焯港特鋼有限公司

PEAK KONG SPECIAL STEEL CO., LTD.



**煌
港
特
鋼**
PEAK KONG
SPECIAL STEEL



先進高強度結構型材-建造未來

*Advanced high-strength structural profiles
- Building the future*



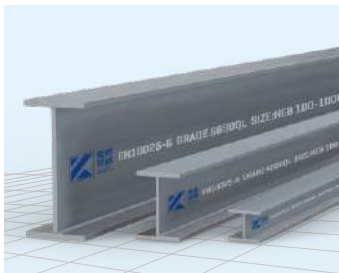
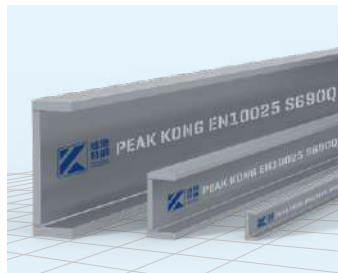
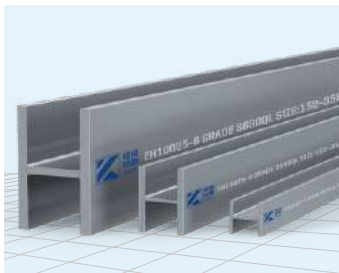
應用領域 APPLICATIONS

- 高層建築結構 High-Rise Building Structures
- 橋樑工程 Bridge Engineering
- 礦山設備 Mining Equipment
- 海洋工程 Marine Engineering
- 高速鐵路 High-Speed Railway



煌港特鋼S690高強度鋼結構型材在建築中應用，具有良好的焊接性能和彎曲性能，結構設計師經常選擇這種高性能，高拉伸強度的多功能產品來減輕結構重量。

Peak Kong Special Steel S690 grade high strength structural steel sections are effectively used in construction, with good welding performance and bending performance. structural designers often choose this high-performance, high-tensile strength and multi-functional product to reduce structural weight.



產品 Product	參考標準 Ref. Norm	公差標準 Tolerances Norm
等邊角鋼 Equal angles	EN 10025-1/2	EN 10056
不等邊角鋼 Unequal angles	EN 10025-1/2	EN 10056
T型鋼 Tee-sections	EN 10025-6	EN 10034
UPN槽鋼 UPN-channels	EN 10025-6	EN 10034
UPA槽鋼 UPA-channels	EN 10025-6	EN 10034
UPE槽鋼 UPE-channels	EN 10025-6	EN 10034
IPE工字鋼 IPE-beams	EN 10025-6	EN 10034
HEA型鋼 HEA-beams	EN 10025-6	EN 10034
HEB型鋼 HEB-beams	EN 10025-6	EN 10034
工字鋼 Universal beams	EN 10025-6	EN 10034
等邊工字鋼 Universal columns	EN 10025-6	EN 10034

S460先進高強度結構型材-建造未來

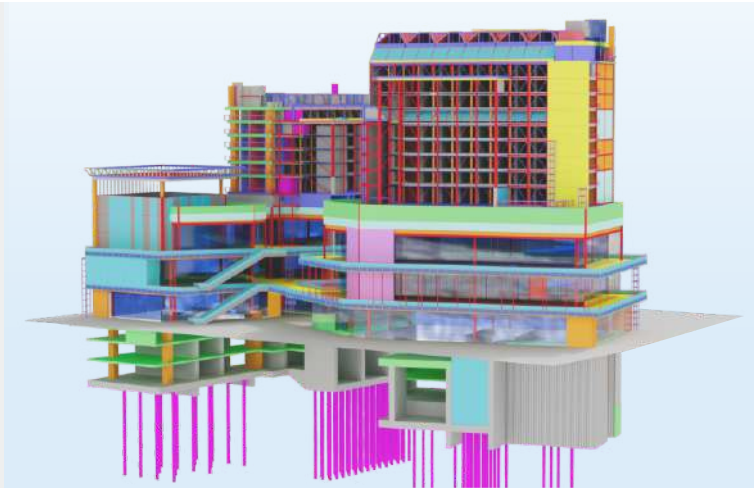
S460 Grade high strength structural steel sections - building the future



煌
港
特
鋼

煌港特鋼有限公司

PEAK KONG SPECIAL STEEL CO., LTD.



...

S460的鋼截面型材是通過自動化激光焊接（根據歐洲標準 EN10025:2004 的 S460M 或 S460J0）生產的，一支起訂，為客戶服務。

The steel section profile of S460 is produced by automated laser welding (according to the S460M or S460J0 specifications in compliance with EN 10025:2004), with a minimum order quantity of 1 PC, serving our customers.



型材優勢 Profile Advantages

- 減小結構截面的尺寸，特別是柱的尺寸
Reduce the size of the structural cross-section, especially the column
- 具有同等結構安全性的輕型建築
Lightweight construction with equal structural safety
- 更好的可焊性，無需或更少的預熱以及更少的焊接材料
Better weldability, no or less preheating and less welding material
- 使用 S460 (65 ksi) 代替 S355 (50 ksi) 時重量減輕10-30%：柱重量減輕 15%，桁架重量減輕 20-35%。
10-30% weight reduction when using S460 (65 ksi) instead of S355 (50 ksi): 15% reduction in column weight and 20-35% reduction in truss weight.
- 高強度可焊接細晶粒結構鋼在所有傳統焊接工藝中均具有良好的焊接性，這些鋼型材用于必須承受高應變的焊接部件。

High-strength weldable fine-grained structural steels offer good weldability in all conventional welding processes, and these steel profiles are used for welded components that must withstand high strains.





煌
港
特
鋼
PEAK KONG
SPECIAL STEEL

煌港特鋼有限公司
PEAK KONG SPECIAL STEEL CO., LTD.



結構型材與自然融合 Structural Profiles And Natural Fusion 考頓鋼-Corten Steel

with a minimum order quantity of 1 PC



煌港特鋼公司為建築市場推出耐候鋼結構型材（激光焊接）

Peak Kong Special Steel launches weathering steel structural sections (laser welding)

耐候鋼結構型材是一種符合EN10025/ASTM A588標準的耐候鋼，適用於具有可持續，裝飾性且經濟高效無塗層鋼型材的結構。

Corten steel structural sections is a weathering steel grade according to EN10025-5 / ASTM A588 for sustainable, decorative, and cost-efficient structures with uncoated steel sections.

耐候鋼具有自我保護、耐用且美觀的特點，強度等同於普通鋼材但維護成本更低，是暴露位置的各種戶外結構的理想選擇，包括橋樑、建築物和鐵路現實的龍門架。

Self-protecting, durable and attractive, the strength is equivalent to ordinary steel but the maintenance cost is lower. weathering steel is ideal for a whole range of outdoor structures in exposed locations including bridges, buildings and catenary gantries on railway lines.

外表有變化但不影響型材強度

The appearance changes but does not affect the strength of the profile



Duplex/super duplex stainless steel structural sections - reduce maintenance , continuous returns



焯港特鋼的雙相不鏽鋼具有更高耐腐蝕性和優異的機械性能，在惡劣和腐蝕性環境中，可提供兩倍於奧氏體和鐵素體不鏽鋼牌號的屈服強度。已被證明是大型熱式海水淡化廠的極好的解決方案。我們的雙相不鏽鋼結構型材根據 EN10088-3 生產，根據此規定，在規定的溫度下進行嚴格的衝擊測試，確保完全符合建築產品法規。

The duplex stainless steel of Peak Kong Special Steel has higher corrosion resistance and excellent mechanical properties, especially in harsh and corrosive environments, providing twice the yield strength of austenitic and ferritic stainless steel grades. It has been proven to be an excellent solution for large-scale thermal seawater desalination plants. Our duplex stainless steel structural profiles are produced according to EN10088-3. Under this regulation, rigorous impact testing is carried out at specified temperatures to ensure full compliance with the Construction Products Regulations.

型材應用 Profile application

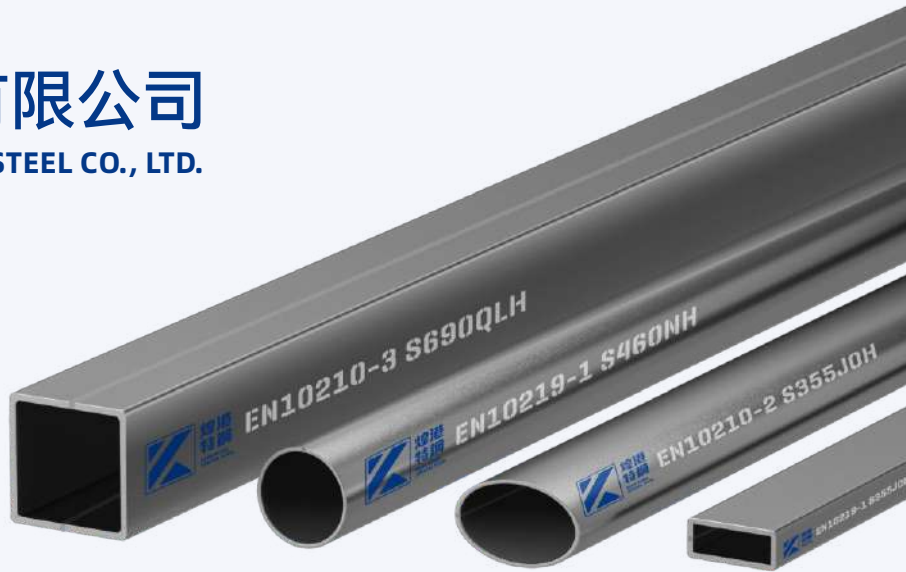
- 石油和天然氣工業設備
Equipment for the oil and gas industry
- 海上平臺
Offshore platforms
- 化學加工工業
Chemical processing industry
- 海水淡化廠
Desalination plants
- 機械和結構組件
Mechanical and structural components
- 電力行業煙氣脫硫繫統
Flue gas desulfurization systems for the power industry
- 土木工程
Civil engineering





煌港
特鋼
PEAK KONG
SPECIAL STEEL

煌港特鋼有限公司
PEAK KONG SPECIAL STEEL CO., LTD.



Carbon steel hollow structural profiles 碳鋼空心結構型材

熱成型結構鋼管和冷成型結構鋼管的製造分別符合以下歐洲標準的規定：

The manufacturing of hot formed / cold formed structural hollow section is respectively regulated by European standard:

EN 10210-2006 1&2

EN 10219-2006 1&2

EN10210-3:2006

圓通的直徑可達1219毫米，方通和扁通的尺寸可達800毫米，厚度可達35毫米。
Round hollow sections are available with a diameter of up to 1219mm, square and rectangular hollow sections up to sizes of 800mm and 35mm of thickness.

煌港特殊鋼空心型材適用於能源產業內的所有建築和機械應用。

Peak Kong Special Steel hollow sections are suitable for all construction and machinery applications within the energy industry.

無論您是鋼結構和基礎設施、海上建築、橋樑、起重機或其他承重結構，您都可以使用煌港空心結構型材建造堅固的基礎，同時減輕結構的重量，節省材料和成本，並進行創新您的未來設計。

Whether you're engaged in steel construction and infrastructure, offshore construction, bridge, crane or other load-bearing structure, you'll be building a strong foundation with Peak Kong structural hollow sections, while slashing the structure's weight, saving on materials and costs, and innovating your designs for the future.



STAINLESS STEEL 不鏽鋼空心結構型材 STRUCTURAL HOLLOW SECTIONS

不鏽鋼空心型材的特點 Features of Stainless Steel Hollow Section:

- 比其他結構件更適合後期應用
More suitable for later applications than other structural parts
- 價格合理且易于連接
Affordable and easy to connect
- 既具有視覺吸引力又易于使用
Both visually appealing and great to use
- 卓越的重量強度比
Excellent weight-to-strength ratio
- 易于操作和彎曲
Easy to operate and bend

不鏽鋼空心型材的應用 Applications of Stainless Steel Hollow Section:

不鏽鋼空心型材用于需要平衡強度、使用和美觀的結構、工業、機械和建築應用。它們用于生產柱子、門和框架。

SS hollow sections are used in structural, industrial, mechanical and construction applications where a balance of strength, use and aesthetic appeal is needed. They are used in the production of posts, gates and frames.



材質 MATERIAL:

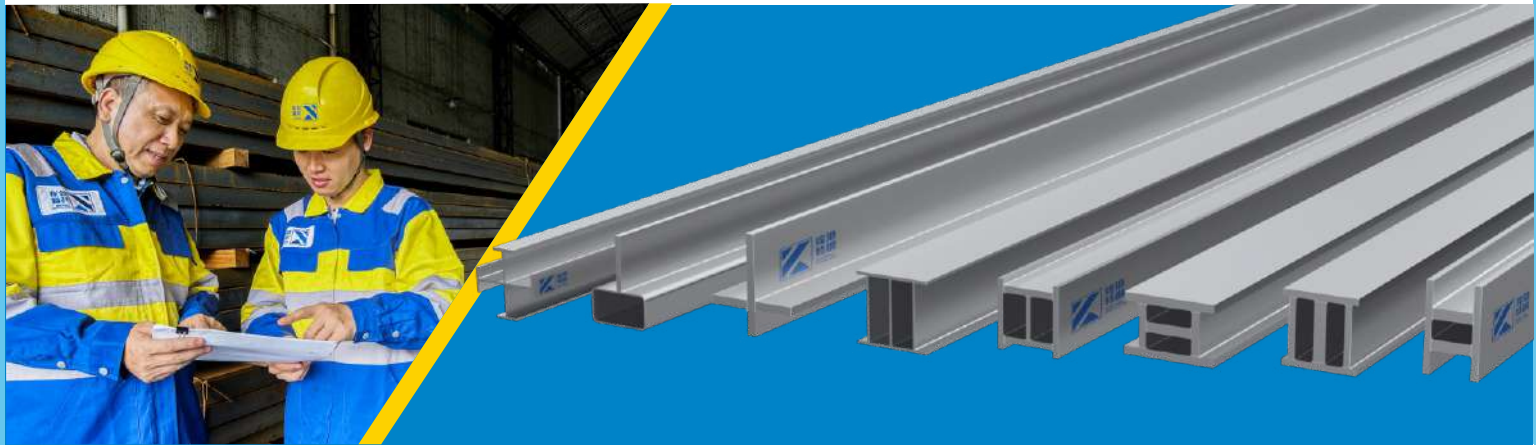
1.4301 / (304) / 1.4307 / (304L) / 1.4401 / (316)
1.4404 / (316L) / 1.4571 / (316Ti)



異型結構鋼型材

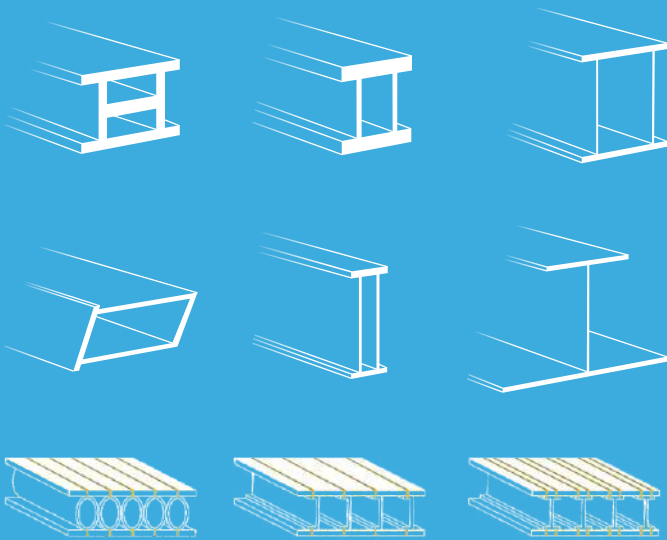
穩健的開發流程/支持型材創新

Special-shaped structural steel sections



可根據您的具體規格形狀定制型材

Custom profiles can be manufactured to your exact specifications



更智能的鋼材 Smarter steel

煌港特鋼是香港領先的專注客戶定制特殊型材，型鋼和複雜形狀的設計和製造商，生產工藝有激光焊接、熱軋。我們的高精度定制型材用於製造各種行業的組件和成品，從具有非標準尺寸的簡單型材到高度複雜和不對稱的形狀。

Peak Kong Special Steel is a leading designer and manufacturer of customer-specific special profiles, sections and complex shapes in Hong Kong, with production processes such as laser welding and hot rolling. Our high-precision custom profiles are used to manufacture components and finished products for a variety of industries from simple profiles with non-standard dimensions to highly complex and asymmetrical shapes.



煌港
特鋼
PEAK KONG
SPECIAL STEEL

煌港特鋼有限公司
PEAK KONG SPECIAL STEEL CO., LTD.

任艷軍 / King Ren

+852-9299 2995

king@peakkong.com

祁偉麟 / Mike Kie

+852-9099 1019

mikekie@peakkong.com

Unit B, 9/F, Worldwide Centre, 123 Tung Chau Street,
Tai Kok Tsui Kowloon, Hong Kong

香港九龍大角咀通洲街123號國貿中心9樓B室

www.peakkong.com.hk

sales@peakkong.com

異形結構型材的優點

Advantages of special-shaped structural profiles

- | | |
|-----------------|---|
| ■ 設計靈活性高 | High design flexibility |
| ■ 材質組合 | Material combination |
| ■ 增加型材尺寸 | Increased profile dimensions |
| ■ 開放式和空心截面 | Open and hollow sections |
| ■ 增加內部空間並便於設備安裝 | Increase internal space and facilitate equipment installation |

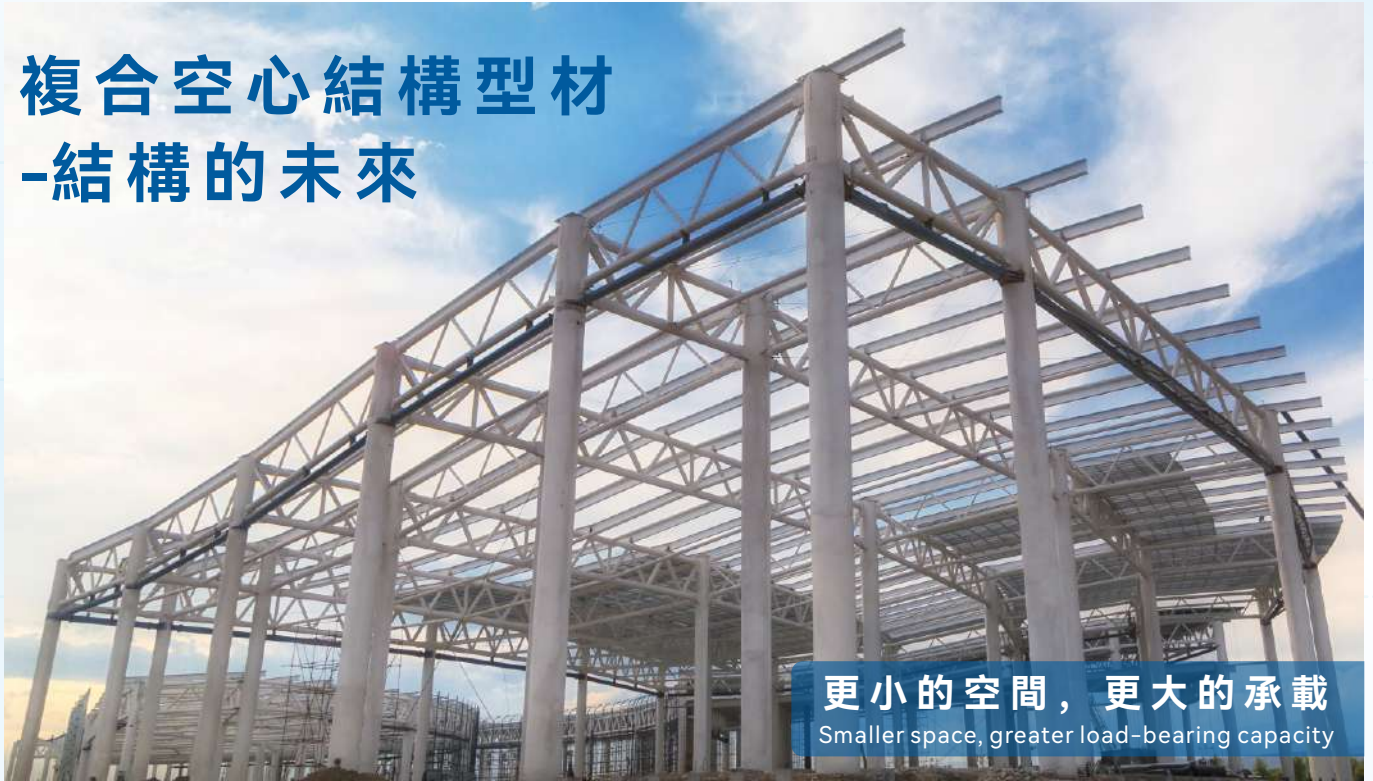


煌港特鋼
PEAK KONG
SPECIAL STEEL

煌港特鋼有限公司
PEAK KONG SPECIAL STEEL CO., LTD.

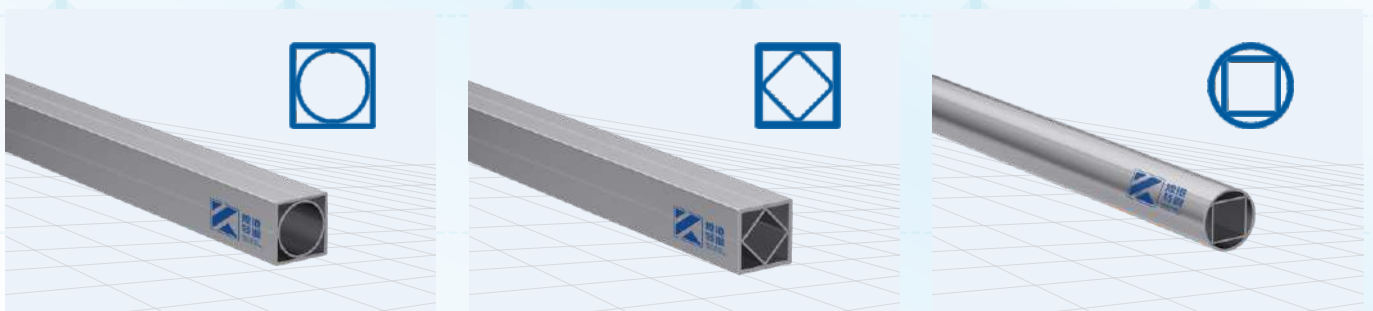
COMPOSITE HOLLOW STRUCTURAL SECTIONS
- THE FUTURE OF STRUCTURES

複合空心結構型材 - 結構的未來



更小的空間，更大的承載

Smaller space, greater load-bearing capacity



主要應用：鋼立柱

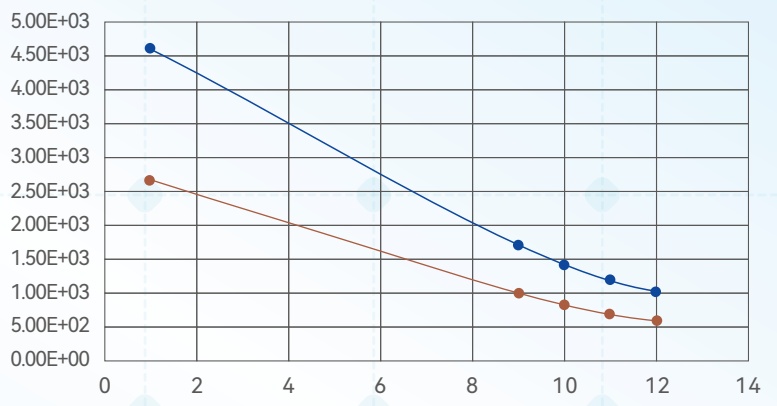
Main application: Steel columns

煌港特鋼專業的產品開發團隊可以幫助您開發完全符合您獨特需求的全新型材，或者調整現有產品以更好地滿足您的需求。

Peak Kong's professional product development team can help you develop a new profiles that perfectly meets your unique needs, or adapt an existing product to satisfy your requirements.

複合鋼管的強度是普通截面的1.8倍

The strength of composite steel pipes is 1.8 times that of ordinary cross-sections



Strength comparison chart

● 複合鋼管 Composite steel pipe ● 普通鋼管 Ordinary steel pipe

